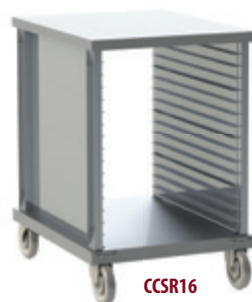


CCSR SPEED RACK CABINETS | Aluminum All Welded | 18" x 26" Trays



CCSR40

NEW!
Heavy Duty Option
 with Heavy Duty
 Reinforcement and
 5" x 2" Heavy Duty
 Polyurethane Casters



CCSR16

Construction

- Constructed of Heavy-Duty extruded 6063 aluminum alloy
- Solid Top and Solid Base
- Open Front and Rear
- Designed for 18" x 26" Trays
- Available in 1" or 1.5" Shelf Spacing Configurations
- Full Size & Half Size Mobile Units on 5" Poly-U Casters
- Fully Welded Assembly for Strength
- Custom Sizes Available

Frame

- Uprights are 2.5" x 1" channel
- Base is 1/8" solid aluminum
- Top is constructed from .090" solid aluminum
- Center support brace (full size only)
- Side ledge panels are 5/8" wide tongue and groove with 1" or 1.5" spacing

Casters

- High Quality 5" Poly-U Casters on all units for easy maneuverability
- Casters bolted to reinforced wheel channel

	Model Number	Overall Dimensions			Tray Cap	Runner Spacing	Ship Lbs.	List Price \$
		W	D	H				
1.5" Spacing	CCSR16	23"	28"	32"	16	1.5"	68	1098
	CCSR32	23"	28"	56"	32	1.5"	78	1329
	CCSR40	23"	28"	70"	40	1.5"	88	1461
1" Spacing	CCSR60	23"	28"	70"	60	1"	98	1572

CC Enclosed Cabinet Options: -HD, -620U, -COR, -BK, -B, -CB
 (see page 18 for option descriptions)

CCSRE ECONOMY SPEED RACKS | Aluminum All Welded | 18" x 26" Trays

**Construction**

- Constructed of Heavy-Duty extruded 6063 aluminum alloy
- Open Frame Design
- Tubular Frame
- Designed for 18" x 26" Trays
- Available in 1" or 1.5" Shelf Spacing Configurations
- Full and Half Size Mobile Units on 5" Poly-U Casters
- Fully Welded Assembly for Strength
- Custom Sizes Available

Frame

- Frame is 1.25" square tubing
- Side ledge panels are tongue and groove with 1" or 1.5" spacing

Casters

- Offset 5" Poly-U Casters on all units for easy maneuverability.

	Model Number	Overall Dimensions			Tray Cap	Runner Spacing	Ship Lbs.	List Price \$
		W	D	H				
1.5" Spacing	CCSRE16	23"	28"	32"	16	1.5"	68	826
	CCSRE40	23"	28"	70"	40	1.5"	88	1091
1" Spacing	CCSRE60	23"	28"	70"	60	1"	95	1185

CCSR Speed Rack Cabinet Options: -AT, -ST, -PT, -BK
 (see page 18 for option descriptions)



CCSRE16



CCSRE40

